

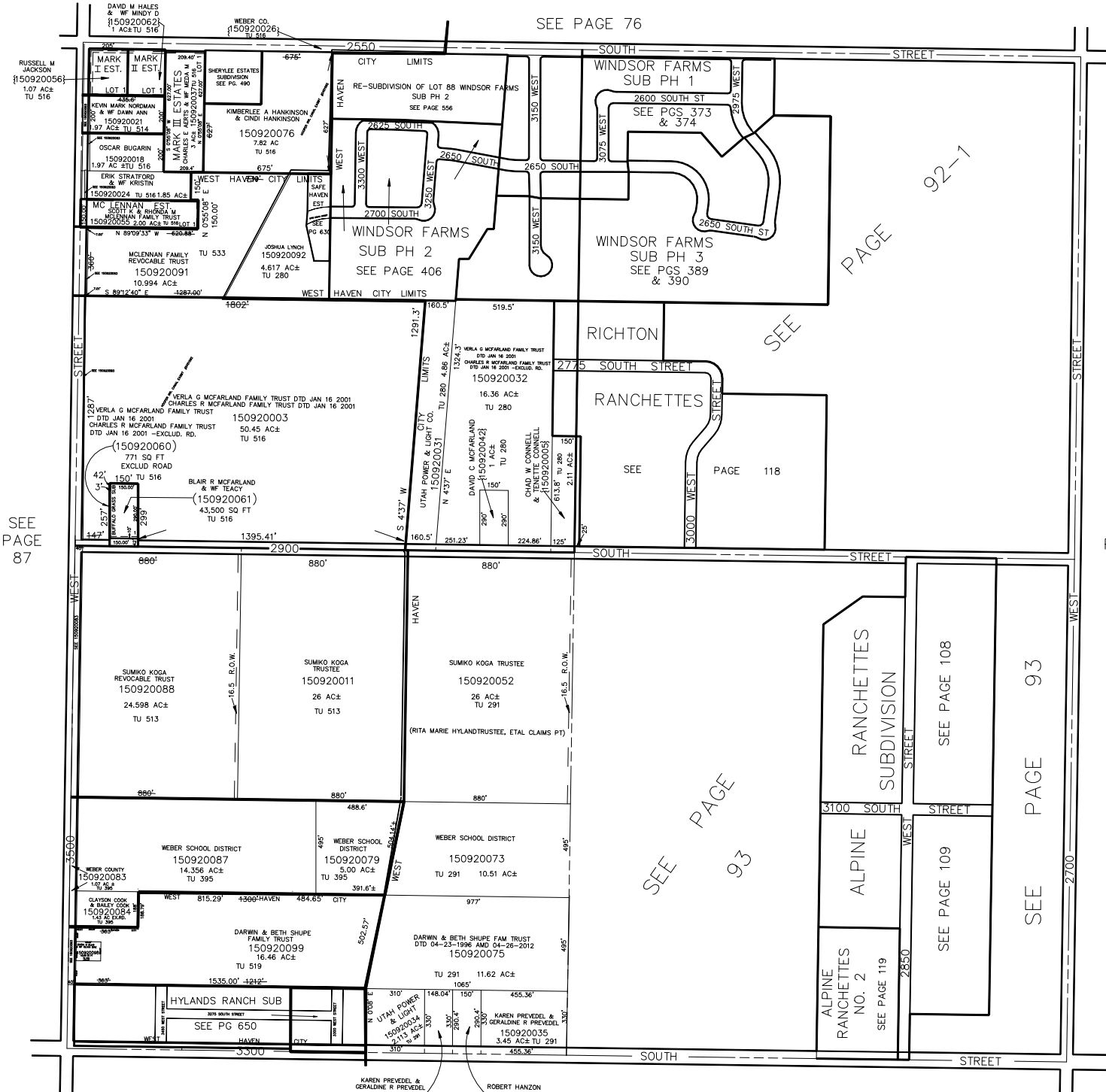
SECTION 34, T.6N., R.2W., S.L.B. & M.

IN WEST HAVEN CITY & WEBER COUNTY

TAXING UNIT: 53, 207, 280, 291, 377, 395, 421,516,514,519, 533

SCALE 1" = 400'

SEE PAGE 76



PAGE 92-1

SEE PAGE 118

SEE PAGE 94

SEE PAGE 93

SEE PAGE 108

SEE PAGE 109

SEE PAGE 119

*SEE ADDRESS AFFIDAVIT E#2934381

KAREN PREVEDEL & CERALDINE R PREVEDEL
150920048
1.12 AC±
TU 291

ROBERT HANZON
150920047
1 AC± TU 291